

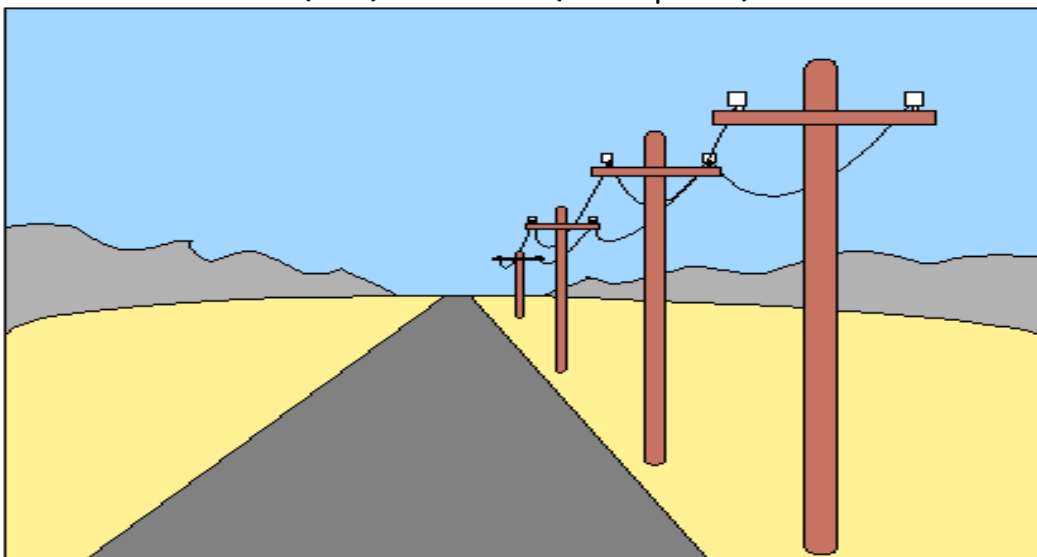
The Long Way Home 2003

February 22, 2003

Alan & Amy Smith, rallymasters

asmith2357@aol.com

(585) 359-4688 (fax & phone)



A rally of approximately 160 competitive (200 total) miles using paved & unpaved roads in the New York Southern Tier.

This rally starts and ends at the Crossroads Restaurant at the corner of routes 5 & 20 and 15A in Lima, NY.

Schedule:	Registration	4:00 - 5:00 PM
	Novice School	4:30 PM
	Driver's Meeting	5:10 PM
	First Car Off	5:31 PM

Fees:	\$20 / car for SCCA members
	\$25 / car for guests

35 car limit - pre-registration suggested and appreciated!

For more info, please see: www.flr-scca.com