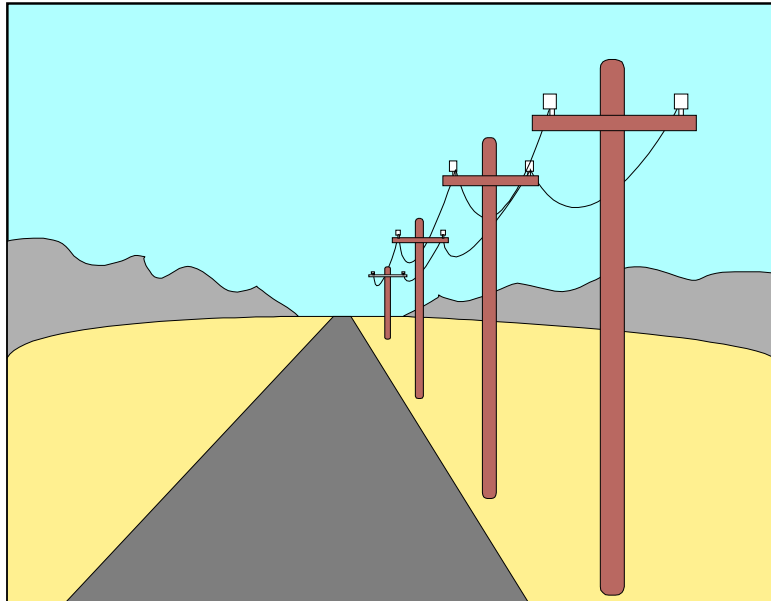


The Long Way Home

January 31, 2004



A rally of approximately 160 competitive (200 total) miles using paved and unpaved roads in the New York Southern Tier.

The Rally starts and ends at the Crossroads Restaurant in Lima, NY (near the corner of routes 5/20 and 15A). From route 390, exit 10, travel about four miles East on route 5/20. The Crossroads will be on your left.

\$25/car for SCCA members, \$35/car for guests
Equipped, Limited, Stock, and Novice classes.

Schedule: Registration	4:00 to 5:00 PM
Novice school	4:30 PM
Driver's Meeting	5:10 PM
First car starts	5:31 PM
First car finishes	about 11:30 PM

Contact the rallymaster to pre-register and for answers to questions:

Alan Smith

Asmith2357@aol.com

(585) 359-4688